



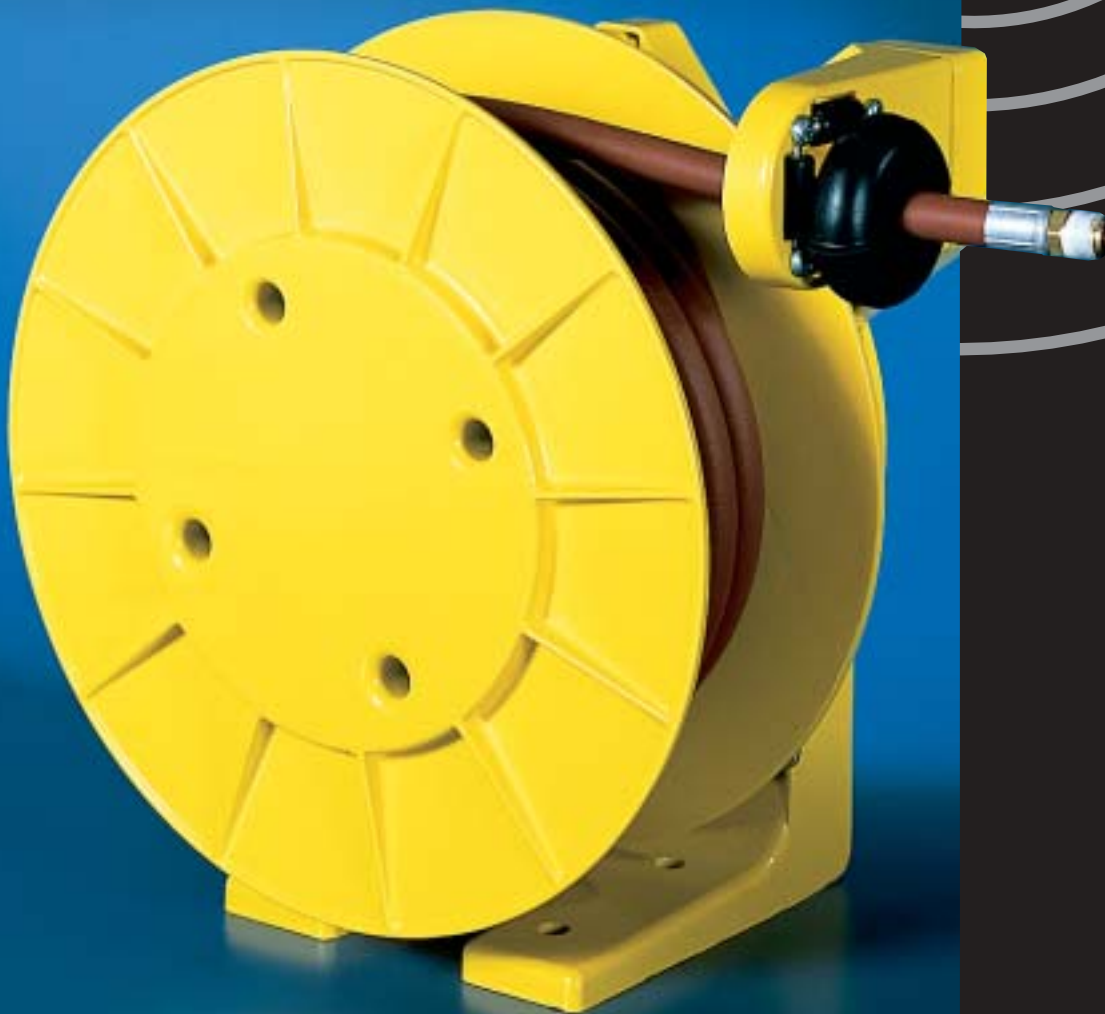
**AKAPP-STEMMANN**

Member of the Fandstan Electric Group

# HOSE REELS

**D650**

**D650SS**



# AKAPP ALUMINUM HOSE REELS

for water, air, oil und grease

**Series D650  
and D650SS**

## Some important features:

- **Corrosion resistant:** housing, frame and other major components are constructed of precision engineered heavy duty aluminium for years of rust free service.
- **Containerized main spring:** makes spring replacement safe, simple and fast. Superior spring design makes replacement an infrequent event.
- **Ratchet lock:** can be engaged when continuous spring tension is not required, e.g. while working with hand tools.
- **Anti lock-out ratchet system:** prevents reel lock up when hose is fully extended.
- **Adjustable hose guide** assures smooth pay out and retrieval. Maximises the life duty cycle of your valuable hoses!

AKAPP hose reels have been designed to provide top performance for both general and industrial use.

The design of the reels maximises:

- **convenience:** easy installation, use and maintenance;
- **reliability:** built using high quality component parts;
- **safety:** AKAPP reels eliminate the kinks and tangles that cause accidents and damage equipment.

**Save money, work safe: use AKAPP reels!**

## Also available:



Hose reel series **D400** .

Economy hose reels, feature tough, corrosion resistant housing. Ready for use! With max. 5,5 m hose, inner diameter 1/4" or 4,2 m hose, inner diameter 3/8". Bracket for wall or ceiling mounting included.

AKAPP-STEMMANN helps you get the right equipment for the job. Please contact us or visit our internet site to obtain more information.

## The Netherlands (head office):

Nijverheidsweg 14,  
3771 ME Barneveld  
Tel.: (+)31 342-403900  
Fax: (+)31 342-403912

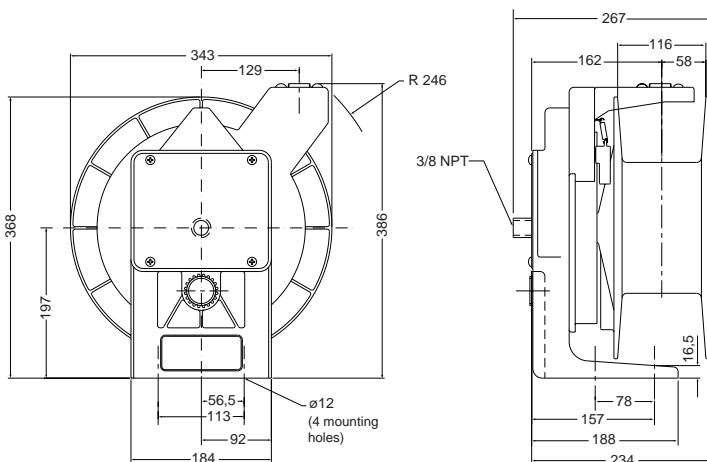
E-mail : [info@akapp.com](mailto:info@akapp.com)  
Internet : [www.akapp.com](http://www.akapp.com)



**AKAPP-STEMMANN**

Member of the Fandstan Electric Group

*Flexible with energy!*



## REEL SELECTION CHART:

standard type	lead-free type	hose incl./excl.	inner diam. (mm)	outer diam. (mm)	length (m)	press. max. (bar)
D651*	D651SS*	excl.		16	15,7	
D652*	D652SS*	excl.		19	12	
D653	D653SS	incl.	6,4	16	10,7	13,5
D654	D654SS	incl.	6,4	16	15,7	13,5
D655	D655SS	incl.	9,7	19	10,7	13,5
D656	D656SS	incl.	9,7	19	12	13,5

\* 15,7 m (manual winding only)  
12,5 m (automatic winding)

\*\* Hose suitable for 13,5 bar max., reel suitable for 20 bar max.

Note: this chart is for indication only. Let AKAPP-STEMMANN advise you about the best suitable reel for your specific application!

All performances and details are under proviso.